



Quick release clamp



Band clamp fixing  
For plain ended tubes

## ***Parallel Flexiducts***

Parallel Flexiducts have been developed as a part of a range of flexible connectors to make the joining of similar sized pipes simple. The ends are moulded to replace the gasket used in standard quick couplings and provide crevice free smooth transitions.

### ***Materials:***

Virgin translucent silicone rubber compliant to CFR(FDA) standard 177.2600 and USP class VI. (*Certificate supplied with each duct.*)

### ***Vibration.***

The ducts are thin walled and so readily absorb vibrations making them ideal for feeding vibrating equipment

### ***Weighing:***

Due to their flexibility the duct are ideal for feeding applications to weighing systems.

### ***Method of use:***

Ducts are clamped to adjacent flanges using standard clamps and a specially designed clamping ring.

For non-flanged pipes the Flexiduct can be attached using a standard band clamp.

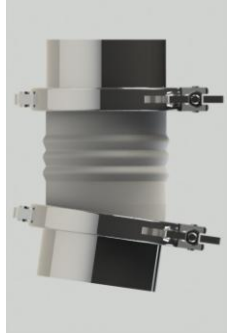
For further dimensional & technical information see our Flexiduct technical data sheet.

## ***Connection Systems***

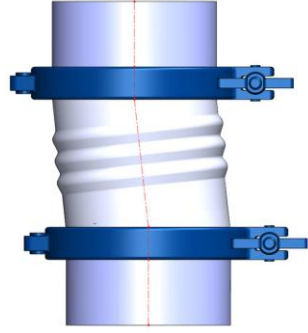
4-5, Forge Mills Park, Station Road,  
Coleshill, Warwickshire. U.K. B46 1JH  
Tel: +44 (0) 1675 46 76 36.

[www.connectionsystems.co.uk](http://www.connectionsystems.co.uk)

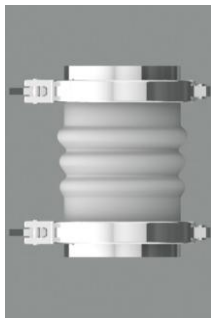
***Connection Systems*** is a division of Terriva Ltd



Angular  
Misalignment



Vertical  
Misalignment



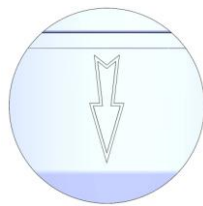
Compression



Elongation



Powder Shedding



Flow direction

## ***Parallel Flexiducts***

### ***Coping with Misalignment.***

The ducts have been designed to compensate for reasonable levels of misalignment in all planes. The convolutions allow the duct to be stretched, compressed and to cope with angular and vertical misalignments.

The inclusion of the convolutions makes it easy for operators to stretch or compress the seal to suit the positions of the flanges.

### ***Designed to shed Powder.***

Parallel Flexiducts have a right and wrong way for installation. The convolutions are asymmetric. One side has a steep angle to ensure that so that powder does not collect within the convolution. Arrows moulded into the surface define the flow direction.

### ***Visible Powder flow.***

The powder flow within the duct is clearly visible due to the translucent material used for the ducts.

### ***Blockage & Height sensing***

Powder blockage or height can be checked using a capacitive sensor located outside the duct to eliminate product contact.

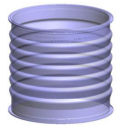
***Connection Systems***

4-5, Forge Mills Park, Station Road,  
Coleshill, Warwickshire. U.K. B46 1JH

Tel: +44 (0) 1675 46 76 36.

[www.connectionsystems.co.uk](http://www.connectionsystems.co.uk)

***Connection Systems*** is a division of Terriva Ltd



Parallel Flexiduct



Ferrules



Clamping Rings



Clamps



Band clamps

## Components

### ***Ferrules.***

The ducts are designed to work with ferrules to standard BS4825 Part 3. Ferrules provided by Connection Systems will be 21mm overall height except for 300mm ND which are 28mm A ferrule will be required for the equipment to each side of the duct.

### ***Clamping rings***

Made from grade 316 stainless steel the clamping ring is used behind the duct edge to provide the clamping surface.

### ***Clamps:***

Our range of clamps are made from grade 304 stainless steel.

### ***Flexi Ducts :***

Ducts are clamped to adjacent flanges using standard clamps and a specially designed clamping ring.

### ***Band Clamps***

For non-flanged pipes the Flexiduct can be attached using a standard band clamp. These incorporate over-centre latch for positive locking.

### ***Part Nos. & heights***

	300	250	200	150	100
<b>Part No</b>	31786	31785	31780	30510	31784
<b>Height</b>	200	200	200	150	100
<b>Clamp Part No</b>	004586	004585	004584	004583	003427
<b>Ferrule Part No</b>	000044	000043	000041	000039	000031
<b>Ferrule Height</b>	28mm	21mm	21mm	21mm	21mm
<b>Clamp Ring Part No</b>	32502	32501	32500	32499	32503
<b>Band Clamp Part No</b>	003311	003310	003309	003308	003307

*Italic Print* – sizes available now – other sizes coming soon – please call for further information.

## **Connection Systems**

4-5, Forge Mills Park, Station Road,  
 Coleshill, Warwickshire. U.K. B46 1JH  
 Tel: +44 (0) 1675 46 76 36.

[www.connectionsystems.co.uk](http://www.connectionsystems.co.uk)

**Connection Systems** is a division of Terriva Ltd